



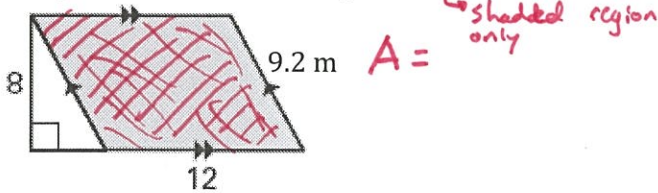
Name: _____
Mr. Tiénou-Gustafson & Mr. Bielmeier
Geometry, Period _____
Due Date: Wed, 25 Mar 2015

HW126_TrapezoidAngles

**Geometry
Homework**

Failure to show all work (mark up all diagrams and write out needed formulas) and/or write in complete sentences will result in LaSalle.

- 1) Find the area of the parallelogram.

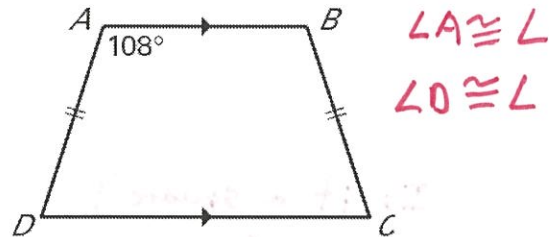


- 2) The lengths of the diagonals of a rhombus are 10 and 24 meters. A) Find the perimeter of the rhombus. B) Find the area of the rhombus.

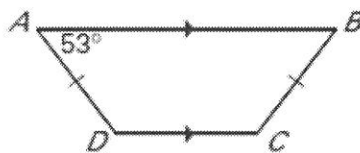
Draw a picture
what's the formula
for area of a
rhombus?

- 3) The perimeter of a rhombus is 60 feet and one of its diagonal has a length of 20 feet. Find the area of the rhombus. Round each step to the nearest tenth.

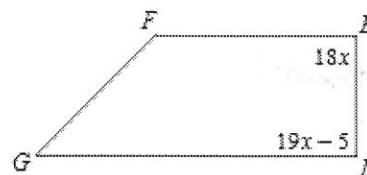
- 4) Find the measures of angles B, C and D.



- 5) Find the measurements of angle B, C, and D.

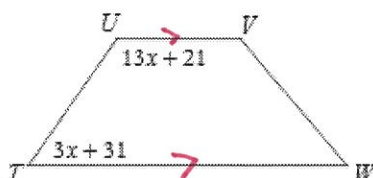


- 6) Find $m\angle E$ if $\angle E$ and $\angle D$ are right angles

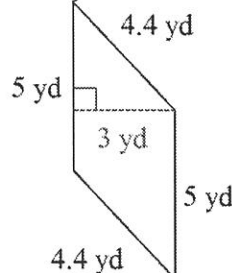


- 7)

Find $m\angle T$

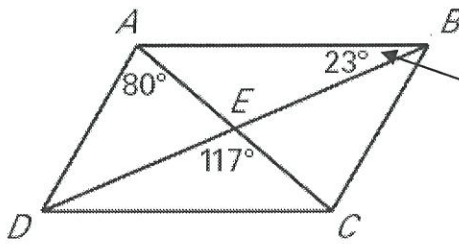


- 8) Find the area of the parallelogram below.



Remember if you see an angle written with 3 letters we want the middle angle

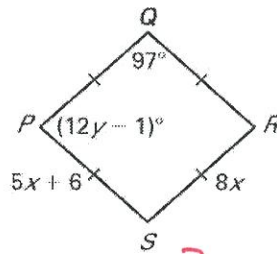
- 9) Find the indicated measures in $\square ABCD$ below using your knowledge of parallel lines & parallelograms. Mark all congruent angles in the diagram. Then write the angle measures to the right.



Remember, angles are named with the vertex in the middle, so this could be called $\angle ABE$, $\angle ABD$, $\angle DBA$ or $\angle EBA$.

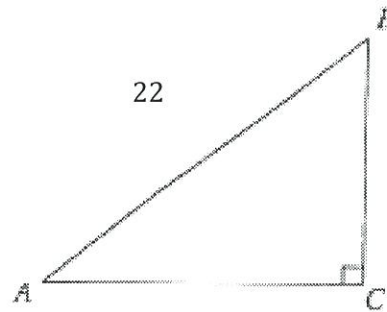
- $m\angle AEB = 117^\circ$ (vertical angles)
- $m\angle BAE$
- $m\angle AED = 63^\circ$ (angles on a line)
- $m\angle ECB$
- $m\angle BAD$
- $m\angle DCE$
- $m\angle ADC$
- $m\angle DCB$

- 10) Classify the special quadrilateral (give its name). Explain your reasoning. Then find the values of x and y . (You do not need to copy the figure, but do show work)



Is it a square?
Are you sure?

- 11) The hypotenuse of the right triangle ABC shown below is 22 feet long. The cosine of angle A is $4/5$. About how many feet long is segment AC?



- 12) If one diagonal of a rhombus is 30 cm and the other is 16 cm. Draw & label the figure.

- How long is each side of the rhombus?
- Find the perimeter.
- Find the area.

use your purple sheet!

- 13) The diagonal of a square is 16 inches. Draw & label the figure.

- How long is each side of the square?
- Find the perimeter.
- Find the area.